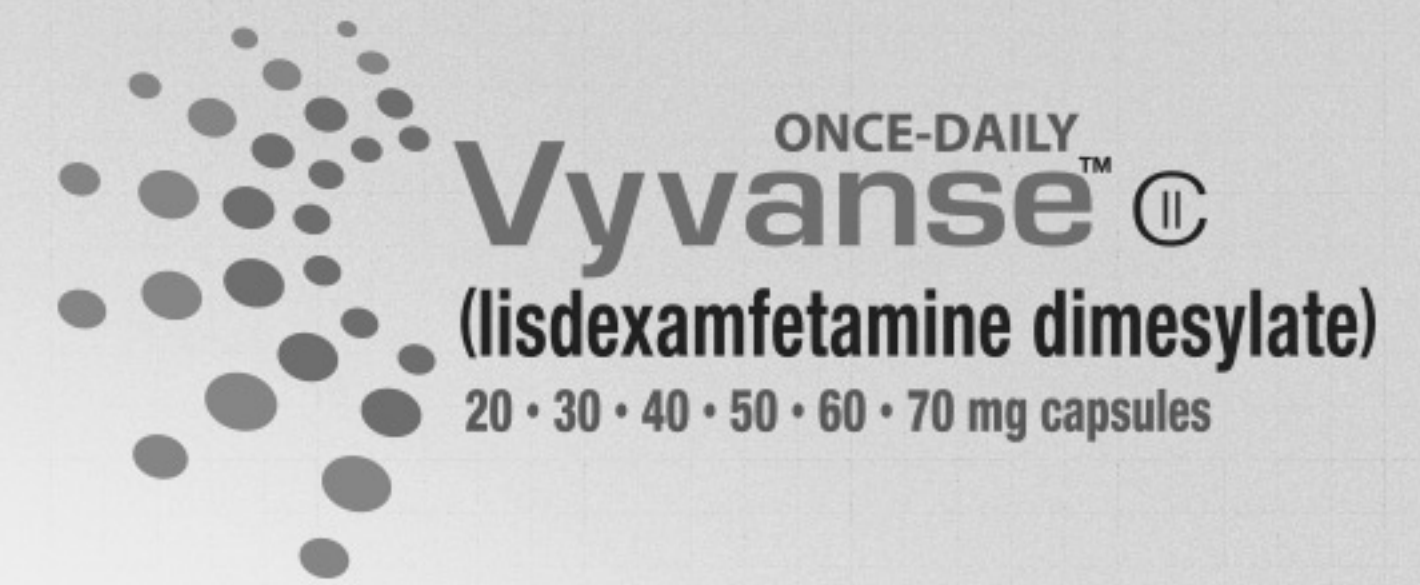


Overview

Access and Affordability in the Greater San Francisco Area

Commercial

Medicaid



IMPORTANT SAFETY INFORMATION

WARNING: ABUSE AND DEPENDENCE

- **CNS stimulants (amphetamines and methylphenidate-containing products) have a high potential for abuse and dependence.**
- **Assess the risk of abuse prior to prescribing and monitor for signs of abuse and dependence while on therapy.**

- **Contraindications**
- **Known hypersensitivity to amphetamines or other ingredients in Vyvanse. Anaphylactic reactions, Stevens-Johnson syndrome, angioedema**

Please see full prescribing information, including Boxed WARNING regarding Potential for Abuse and Dependence

ISI

Full PI

Summary

Health Provider

Status*

Copay*

Please Enter ZIP Code

ZIP Code

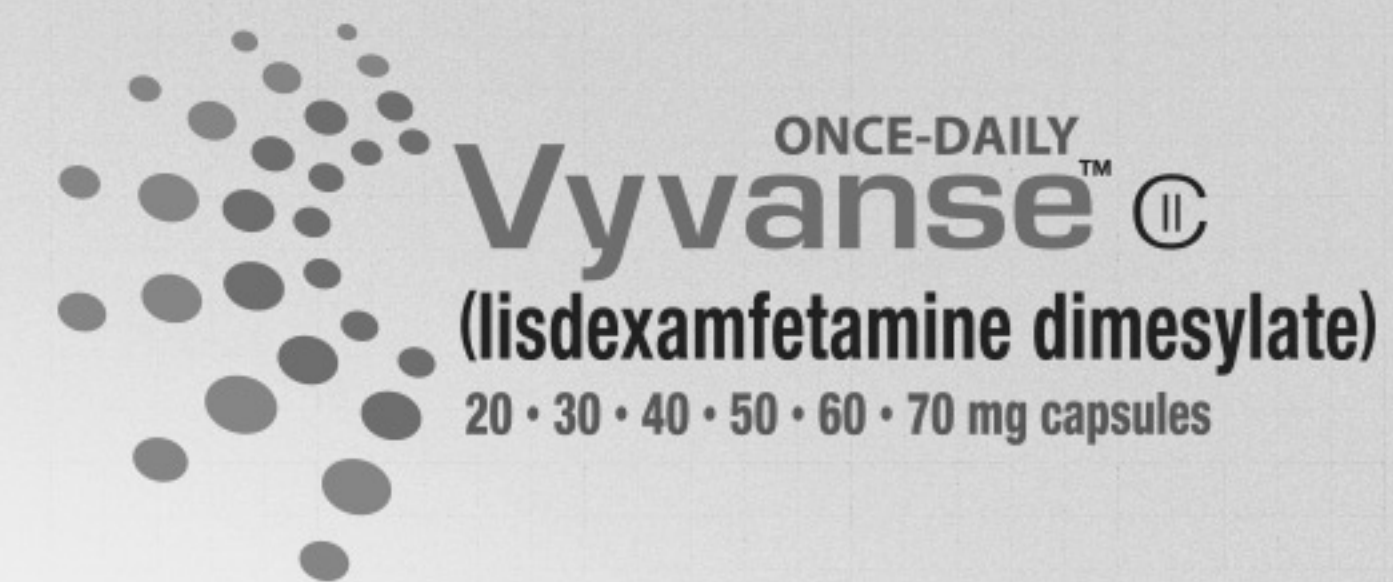
OK

Data Current As Of
09.27.2013

Last Sync: 09.27.2013

*Formulary and copay data are provided by Fingertip Formulary, are ranked by covered lives.





Access and Affordability in the Greater San Francisco Area

> Commercial

Medicaid



Health Providers (9)	Status*	Copay*
Kaiser Permanente >	Tier 2	\$15-\$20
Anthem	Tier 2 (PA)	\$10-\$15
BlueShield California >	Tier 2	\$10-\$15
CVS/Caremark >	Tier 2	\$10-\$15
Medco >	Tier 2	\$10-\$15
Express Scripts >	Tier 2	\$10-\$15
Health Net >	Tier 2	\$15-\$20
UnitedHealthCare >	Tier 2	\$25-\$30
Aetna >	Tier 2	\$20-\$25

IMPORTANT SAFETY INFORMATION

WARNING: ABUSE AND DEPENDENCE

- **CNS stimulants (amphetamines and methylphenidate-containing products) have a high potential for abuse and dependence.**
- **Assess the risk of abuse prior to prescribing and monitor for signs of abuse and dependence while on therapy.**

- Contraindications
- Known hypersensitivity to amphetamines or other ingredients in Vyvanse. Anaphylactic reactions, Stevens-Johnson syndrome, angioedema

Please see full prescribing information, including Boxed WARNING regarding Potential for Abuse and Dependence

ISI

Full PI

Summary

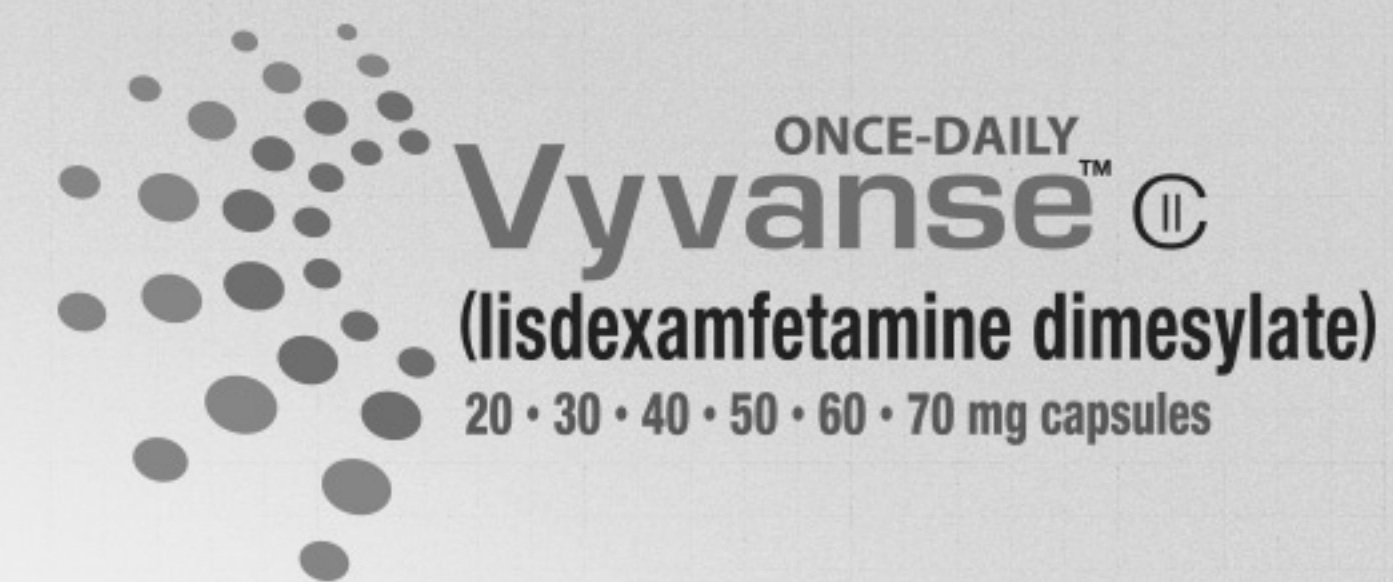
Data Current As Of
09.27.2013

*Formulary and copay data are provided by Fingertip Formulary, are ranked by covered lives.



Last Sync: 09.27.2013

Dynamic Plans



Access and Affordability in the Greater San Francisco Area

> Commercial **Medicaid**



Health Providers (9)	Status*	Copay*
Kaiser Permanente >	Tier 2 (PA)	\$15-\$20
Anthem >	Tier 2	\$10-\$15
BlueShield of California >	Tier 2	\$10-\$15
CVS/Caremark >	Tier 2	\$10-\$15
Medco >	Tier 2	\$10-\$15
Express Scripts >	Tier 2	\$10-\$15
Health Net >	Tier 2	\$15-\$20
UnitedHealthcare >	Tier 2	\$25-\$30
Aetna >		\$20-\$25

IMPORTANT SAFETY INFORMATION

WARNING: ABUSE AND DEPENDENCE

- **CNS stimulants (amphetamines and methylphenidate-containing products) have a high potential for abuse and dependence.**
- **Assess the risk of abuse prior to prescribing and monitor for signs of abuse and dependence while on therapy.**

- Contraindications
- Known hypersensitivity to amphetamines or other ingredients in Vyvanse. Anaphylactic reactions, Stevens-Johnson syndrome, angioedema

Please see full prescribing information, including Boxed WARNING regarding Potential for Abuse and Dependence

ISI

Full PI

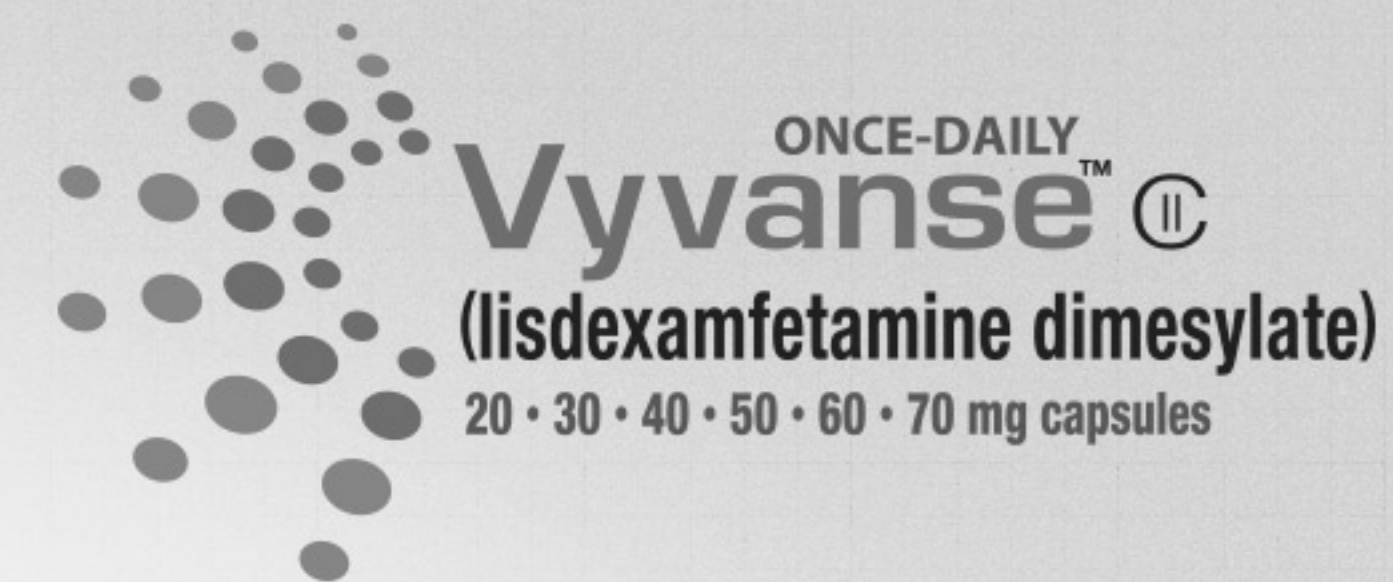
Summary

Data Current As Of
09.27.2013

*Formulary and copay data are provided by Fingertip Formulary, are ranked by covered lives.

Last Sync: 09.27.2013





Access and Affordability in the Greater San Francisco Area

> Commercial

Medicaid



Health Providers (9) / Plans (5)	Status*	Copay*
Anthem <input checked="" type="checkbox"/> All ▼	Tier 2 (PA)	\$10-\$15
Shield Saver	Tier 2	\$10-\$15
Shield Plus	Tier 2	\$10-\$15
Shield Gold	Tier 2	\$10-\$15
Google Employee	Tier 2	\$10-\$15
Intel Employee	Tier 2	\$15-\$20
BlueShield California >	Tier 2	\$25-\$30
CVS/Caremark >	Tier 2	\$20-\$25
Medco >	Tier 2	\$15-\$20
Express Scripts >	Tier 2 (PA)	\$10-\$15
Health Net >	Tier 2	\$10-\$15
UnitedHealthCare >	Tier 2	\$10-\$15
Aetna >	Tier 2	\$10-\$15

IMPORTANT SAFETY INFORMATION

WARNING: ABUSE AND DEPENDENCE

- **CNS stimulants (amphetamines and methylphenidate-containing products) have a high potential for abuse and dependence.**
- **Assess the risk of abuse prior to prescribing and monitor for signs of abuse and dependence while on therapy.**

- Contraindications
- Known hypersensitivity to amphetamines or other ingredients in Vyvanse. Anaphylactic reactions, Stevens-Johnson syndrome, angioedema

Please see full prescribing information, including Boxed WARNING regarding Potential for Abuse and Dependence

ISI

Full PI

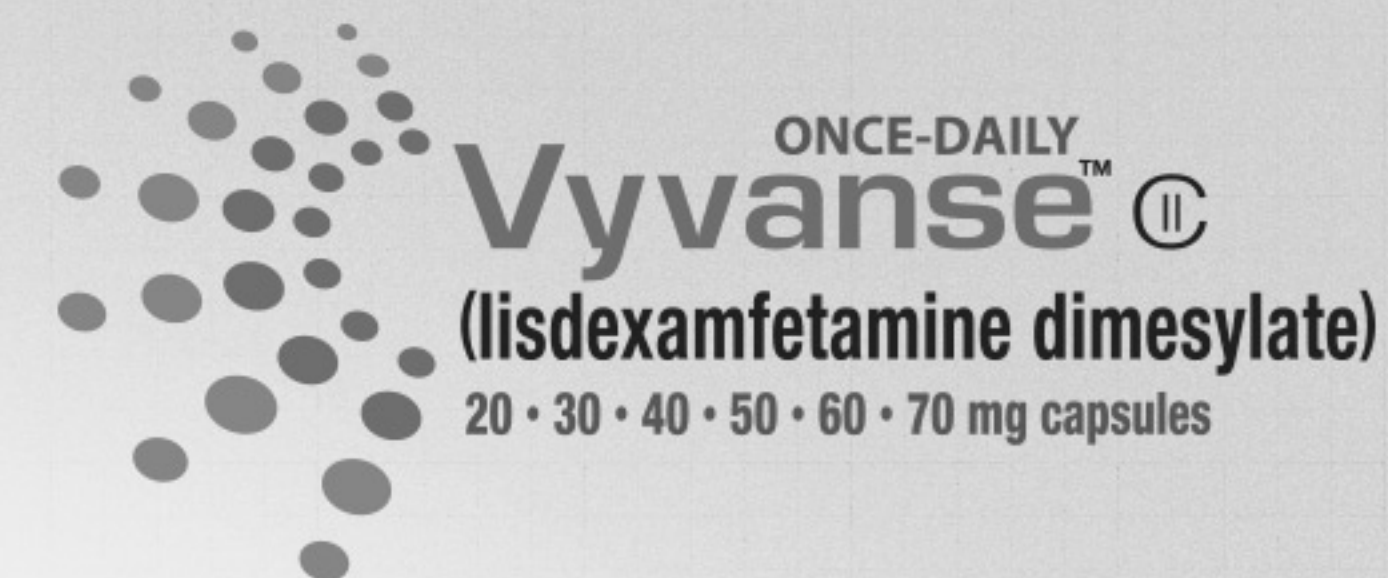
Summary

Data Current As Of
09.27.2013

*Formulary and copay data are provided by Fingertip Formulary, are ranked by covered lives.



Last Sync: 09.27.2013



Access and Affordability in the Greater San Francisco Area

> Commercial

Medicaid



Health Providers (9) / Plans (5)	Status*	Copay*
Anthem <input checked="" type="checkbox"/> All <input type="checkbox"/>	Tier 2 (PA)	\$10-\$15
Shield Saver	Tier 2	\$10-\$15
<input checked="" type="checkbox"/> Shield Plus	Tier 2	\$10-\$15
Shield Gold	Tier 2	\$10-\$15
Google Employee	Tier 2	\$10-\$15
Intel Employee	Tier 2	\$15-\$20
BlueShield California >	Tier 2	\$25-\$30
CVS/Caremark >	Tier 2	\$20-\$25
Medco >	Tier 2	\$15-\$20
Express Scripts >	Tier 2 (PA)	\$10-\$15
Health Net >	Tier 2	\$10-\$15
UnitedHealthCare >	Tier 2	\$10-\$15
Aetna >	Tier 2	\$10-\$15

IMPORTANT SAFETY INFORMATION

WARNING: ABUSE AND DEPENDENCE

- **CNS stimulants (amphetamines and methylphenidate-containing products) have a high potential for abuse and dependence.**
- **Assess the risk of abuse prior to prescribing and monitor for signs of abuse and dependence while on therapy.**

- **Contraindications**
- **Known hypersensitivity to amphetamines or other ingredients in Vyvanse. Anaphylactic reactions, Stevens-Johnson syndrome, angioedema**

Please see full prescribing information, including Boxed WARNING regarding Potential for Abuse and Dependence

Data Current As Of
09.27.2013

*Formulary and copay data are provided by Fingertip Formulary, are ranked by covered lives.

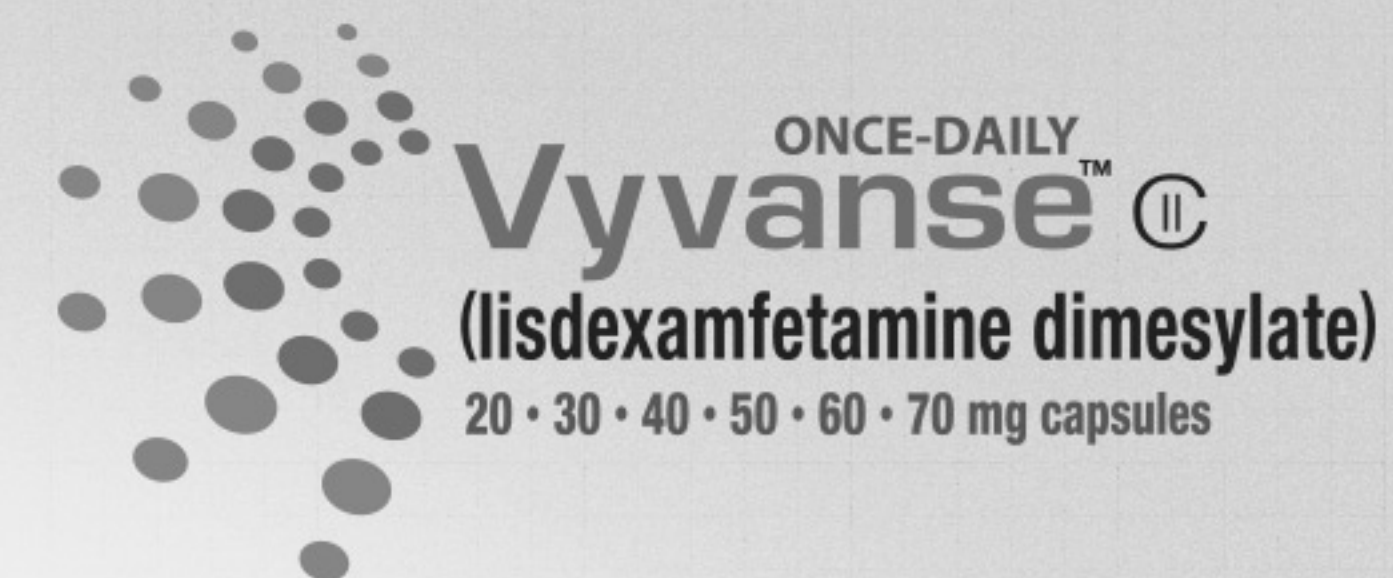
Last Sync: 09.27.2013



ISI

Full PI

Summary



Access and Affordability in the Greater San Francisco Area

> Commercial

Medicaid



Health Providers (9) / Plans (5)	Status*	Copay*
Anthem <input checked="" type="checkbox"/> All <input type="checkbox"/>	Tier 2 (PA)	\$10-\$15
<input checked="" type="checkbox"/> Shield Saver	Tier 2	\$10-\$15
<input checked="" type="checkbox"/> Shield Plus	Tier 2	\$10-\$15
<input checked="" type="checkbox"/> Shield Gold	Tier 2	\$10-\$15
<input checked="" type="checkbox"/> Google Employee	Tier 2	\$10-\$15
<input checked="" type="checkbox"/> Intel Employee	Tier 2	\$15-\$20
BlueShield California >	Tier 2	\$25-\$30
CVS/Caremark >	Tier 2	\$20-\$25
Medco >	Tier 2	\$15-\$20
Express Scripts >	Tier 2 (PA)	\$10-\$15
Health Net >	Tier 2	\$10-\$15
UnitedHealthCare >	Tier 2	\$10-\$15
Aetna >	Tier 2	\$10-\$15

IMPORTANT SAFETY INFORMATION

WARNING: ABUSE AND DEPENDENCE

- **CNS stimulants (amphetamines and methylphenidate-containing products) have a high potential for abuse and dependence.**
- **Assess the risk of abuse prior to prescribing and monitor for signs of abuse and dependence while on therapy.**

- **Contraindications**
- **Known hypersensitivity to amphetamines or other ingredients in Vyvanse. Anaphylactic reactions, Stevens-Johnson syndrome, angioedema**

Please see full prescribing information, including Boxed WARNING regarding Potential for Abuse and Dependence

ISI

Full PI

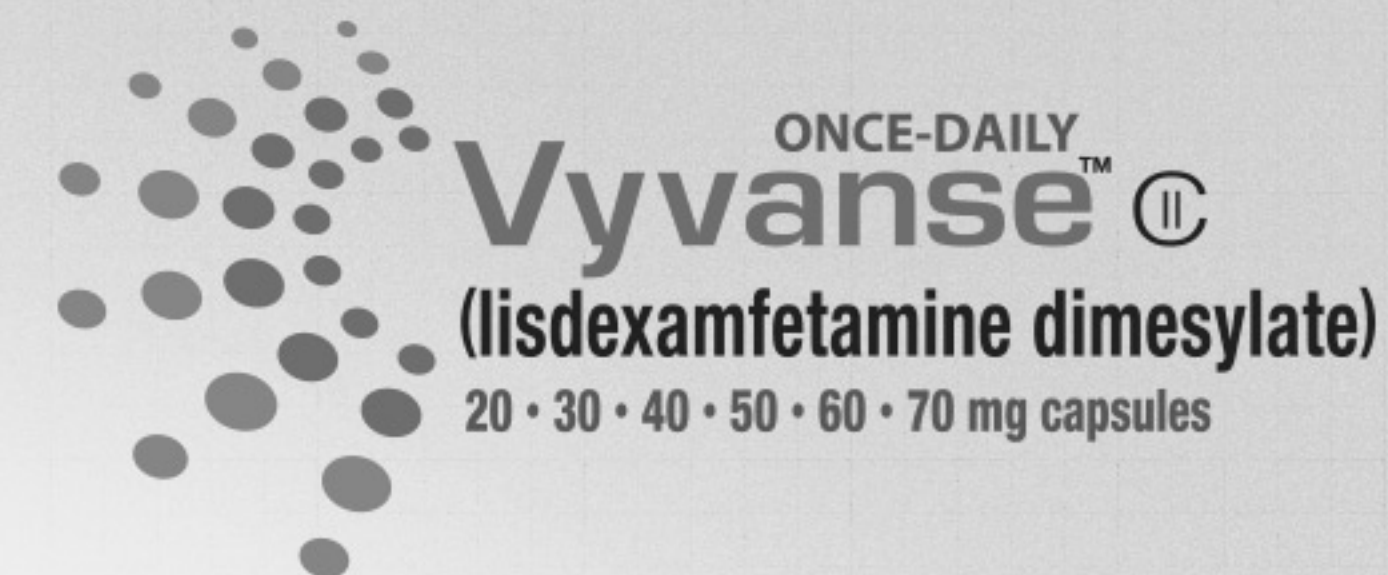
Summary

Data Current As Of
09.27.2013

*Formulary and copay data are provided by Fingertip Formulary, are ranked by covered lives.



Last Sync: 09.27.2013



Access and Affordability in the Greater San Francisco Area

Commercial **Medicaid**



Health Providers (9) / Plans (5)	Status*	Copay*
Anthem <input checked="" type="checkbox"/> All ▼	Tier 2 (PA)	\$10-\$15
<input checked="" type="checkbox"/> Shield Saver	Tier 2	\$10-\$15
<input checked="" type="checkbox"/> Shield Plus	Tier 2	\$10-\$15
Shield Gold	Tier 2	\$10-\$15
<input checked="" type="checkbox"/> Google Employee	Tier 2	\$10-\$15
<input checked="" type="checkbox"/> Intel Employee	Tier 2	\$15-\$20
BlueShield California	Tier 2	\$25-\$30
CVS/Caremark	Tier 2	\$20-\$25
Medco	Tier 2	\$15-\$20
Express Scripts	Tier 2 (PA)	\$10-\$15
Health Net	Tier 2	\$10-\$15
UnitedHealthCare	Tier 2	\$10-\$15
Aetna	Tier 2	\$10-\$15

IMPORTANT SAFETY INFORMATION

WARNING: ABUSE AND DEPENDENCE

- **CNS stimulants (amphetamines and methylphenidate-containing products) have a high potential for abuse and dependence.**
- **Assess the risk of abuse prior to prescribing and monitor for signs of abuse and dependence while on therapy.**

- Contraindications
- Known hypersensitivity to amphetamines or other ingredients in Vyvanse. Anaphylactic reactions, Stevens-Johnson syndrome, angioedema

Please see full prescribing information, including Boxed WARNING regarding Potential for Abuse and Dependence

ISI

Full PI

Summary

Data Current As Of **09.27.2013**

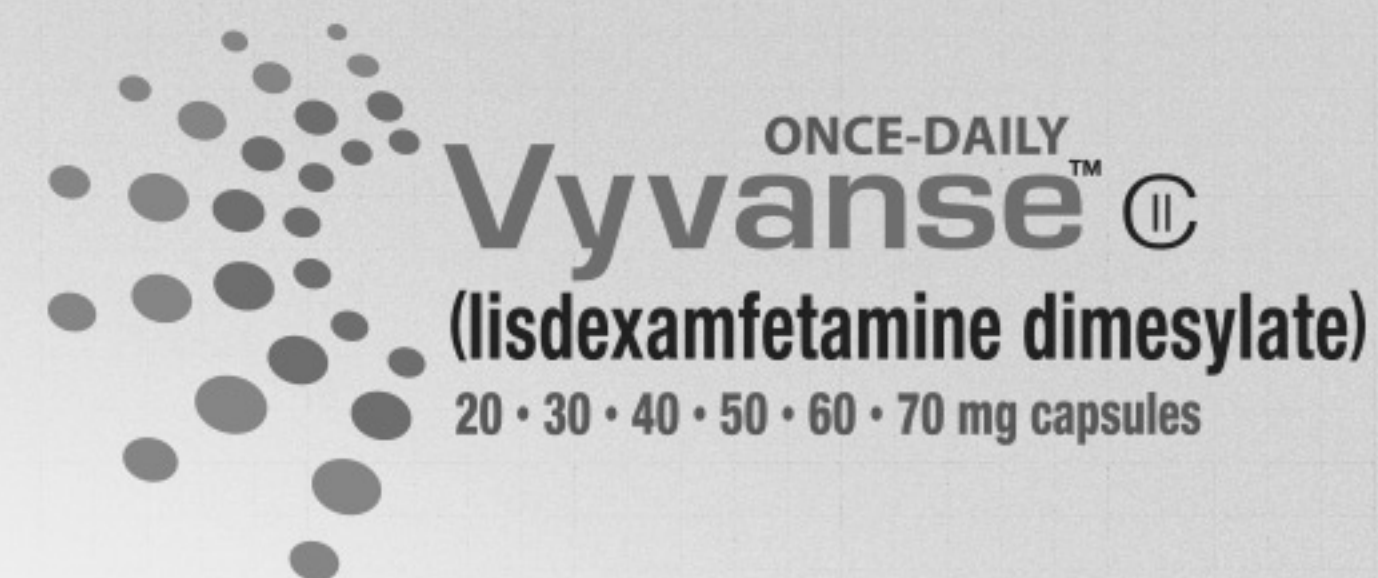
*Formulary and copay data are provided by Fingertip Formulary, are ranked by covered lives.

Last Sync: 09.27.2013



Vyvanse is indicated for the treatment of ADHD in patients ages 6 and above

Access and Affordability in the Greater San Francisco Area



Commercial > Medicaid



Health Providers	Status*	Copay*
STATE MEDICAID		
California State Medicaid	Preferred PA	\$1
MANAGED MEDICAID		
Santa Clara Family	NC (PA)	\$0
Anthem	NC (PA)	\$3
Alameda Alliance for Health	Preferred	N/A
Contra Costa Health	NC (PA)	\$0 - \$15
Partnership Health Plan (CA)	NC (PA)	N/A
San Francisco Health	Preferred	N/A
Health Plan of San Mateo	Preferred	N/A
Health Net	NC (PA)	N/A
Community Health Group (CA)	Preferred	N/A

IMPORTANT SAFETY INFORMATION

WARNING: ABUSE AND DEPENDENCE

- **CNS stimulants (amphetamines and methylphenidate-containing products) have a high potential for abuse and dependence.**
- **Assess the risk of abuse prior to prescribing and monitor for signs of abuse and dependence while on therapy.**

- **Contraindications**
- **Known hypersensitivity to amphetamines or other ingredients in Vyvanse. Anaphylactic reactions, Stevens-Johnson syndrome, angioedema**

Please see full prescribing information, including Boxed WARNING regarding Potential for Abuse and Dependence

ISI

Full PI

Summary

Data Current As Of
09.27.2013

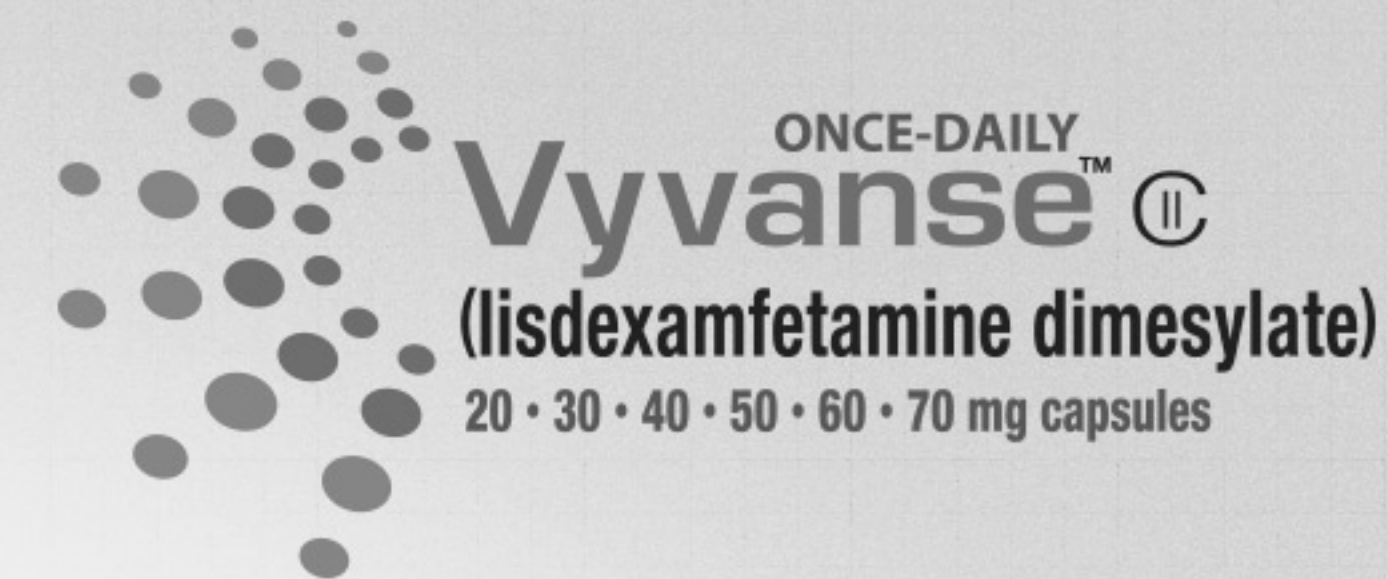
*Formulary and copay data are provided by Fingertip Formulary, are ranked by covered lives.



Last Sync: 09.27.2013

Vyvanse is indicated for the treatment of ADHD in patients ages 6 and above

Access and Affordability in the Greater San Francisco Area



IMPORTANT SAFETY INFORMATION

WARNING: ABUSE AND DEPENDENCE

- **CNS stimulants (amphetamines and methylphenidate-containing products) have a high potential for abuse and dependence.**
- **Assess the risk of abuse prior to prescribing and monitor for signs of abuse and dependence while on therapy.**

- **Contraindications**
- **Known hypersensitivity to amphetamines or other ingredients in Vyvanse. Anaphylactic reactions, Stevens-Johnson syndrome, angioedema**

Please see full prescribing information, including Boxed WARNING regarding Potential for Abuse and Dependence

Commercial > Medicaid



Health Providers	Status*	Copay*
STATE MEDICAID		
California State Medicaid	Preferred PA	\$1
MANAGED MEDICAID		
Santa Clara Family	NC (PA)	\$0
Anthem	NC (PA)	\$3
Alameda Alliance for Health	Preferred	N/A
Contra Costa Health	NC (PA)	\$0 - \$15
Partnership Health Plan (CA)	NC (PA)	N/A
San Francisco Health	Preferred	N/A
Headwaters		N/A
Headwaters		N/A
Coronado		N/A

TIER (T#): A formulary category that determines the amount of copay required for a drug.

PRIOR AUTHORIZATION (PA): The approval process in which a prescriber must justify the use of a prescribed medication.

STEP EDIT (SE): The prescription for a medication is filled only after treatment failure on one or more alternatives.

NOT COVERED (NC): Drugs that are not covered by the plan.

NOT AVAILABLE (N/A): Data are not available.

Data Current As Of
09.27.2013

*Formulary and copay data are provided by Fingertip Formulary, are ranked by covered lives.

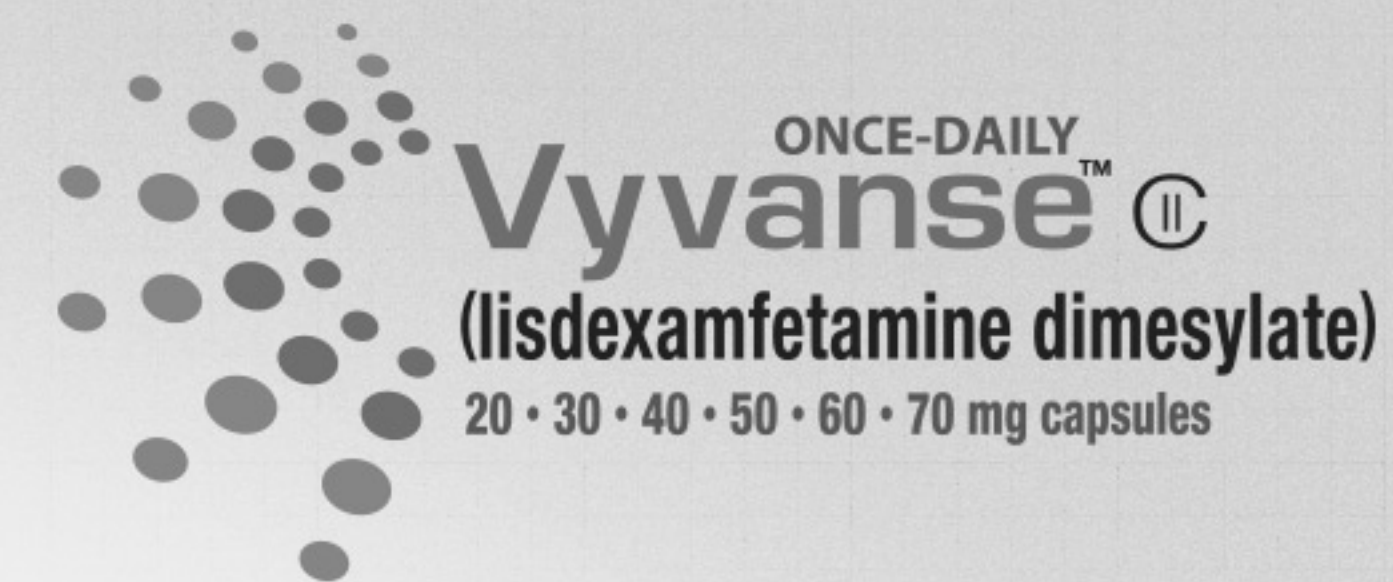
Last Sync: 09.27.2013



ISI

Full PI

Summary



Access and Affordability in the Greater San Francisco Area

> Commercial Medicaid



Health Providers	9	Status*	Copay*
Anthem <input checked="" type="checkbox"/> All	200	Tier 2 (PA)	\$10-\$15
Shield Saver		Tier 2	\$10-\$15
Shield Plus		Tier 2	\$10-\$15
Shield Gold		Tier 2	\$10-\$15
Google Employee		Tier 2	\$10-\$15
Intel Employee		Tier 2	\$15-\$20
Shield Saver		Tier 2	\$25-\$30
Shield Plus		Tier 2	\$20-\$25
Shield Gold		Tier 2	\$15-\$20
Google Employee		Tier 2 (PA)	\$10-\$15
Intel Employee		Tier 2	\$10-\$15
Shield Saver		Tier 2	\$10-\$15
Shield Plus		Tier 2	\$10-\$15
Shield Gold			

IMPORTANT SAFETY INFORMATION

WARNING: ABUSE AND DEPENDENCE

- **CNS stimulants (amphetamines and methylphenidate-containing products) have a high potential for abuse and dependence.**
- **Assess the risk of abuse prior to prescribing and monitor for signs of abuse and dependence while on therapy.**

- **Contraindications**
- **Known hypersensitivity to amphetamines or other ingredients in Vyvanse. Anaphylactic reactions, Stevens-Johnson syndrome, angioedema**

Please see full prescribing information, including Boxed WARNING regarding Potential for Abuse and Dependence

ISI

Full PI

Summary

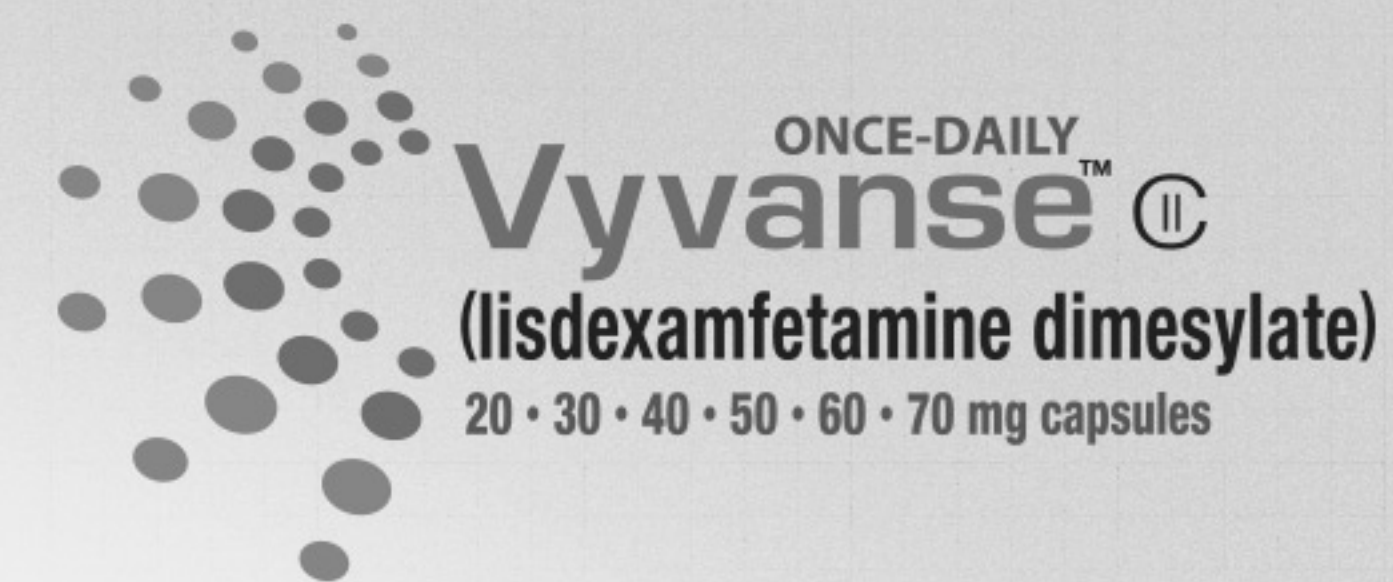
Data Current As Of **09.27.2013**

*Formulary and copay data are provided by Fingertip Formulary, are ranked by covered lives.



Last Sync: 09.27.2013

Search Options



Access and Affordability in the Greater San Francisco Area

> Commercial Medicaid



IMPORTANT SAFETY INFORMATION

WARNING: ABUSE AND DEPENDENCE

Stimulants (amphetamines and methylphenidates) have a potential for abuse and dependence. Use prior to surgery. Monitor for dependence.

Health Providers (9) / Plans (5)	Status*	Copay*
Anthem All v	Tier 2 (PA)	\$10-\$15
✓ Shield Saver	Tier 2	\$10-\$15
✓ Shield Plus	Tier 2	\$10-\$15
Shield Gold	Tier 2	\$10-\$15
✓ Google Employee	Tier 2	\$10-\$15
✓ Intel Employee	Tier 2	\$15-\$20
BlueShield California >	Tier 2	\$25-\$30
CVS/Caremark >	Tier 2	\$20-\$25
Medco >	Tier 2	\$15-\$20
Express Scripts >	Tier 2 (PA)	\$10-\$15
Health Net >	Tier 2	\$10-\$15
UnitedHealthCare >	Tier 2	\$10-\$15
Aetna >	Tier 2	\$10-\$15
>		

- Contraindications
- Known hypersensitivity to amphetamines or other ingredients in Vyvanse. Anaphylactic reactions, Stevens-Johnson syndrome, angioedema

Please see full prescribing information, including Boxed WARNING regarding Potential for Abuse and Dependence

ISI

Full PI

Summary

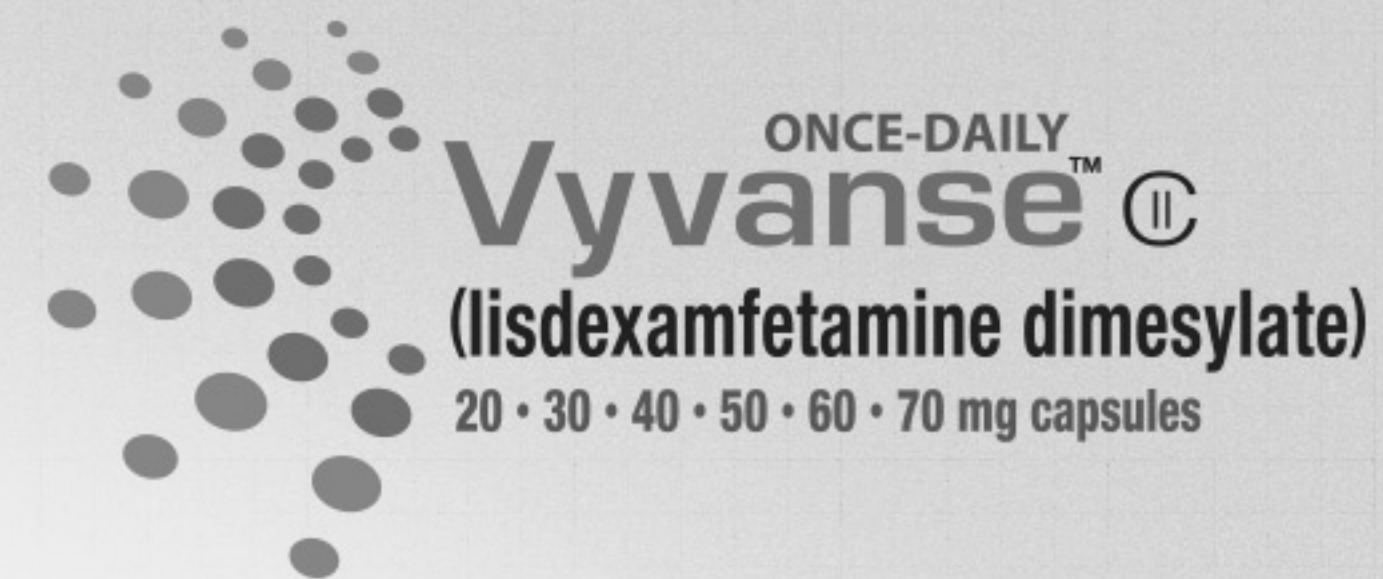
Data Current As Of
09.27.2013

*Formulary and copay data are provided by Fingertip Formulary, are ranked by covered lives.



Last Sync: 09.27.2013

Vyvanse is indicated for the treatment of ADHD in patients ages 6 and above



ALL Commercial Medicaid Plans



Recently Searched Terms

California

coverage

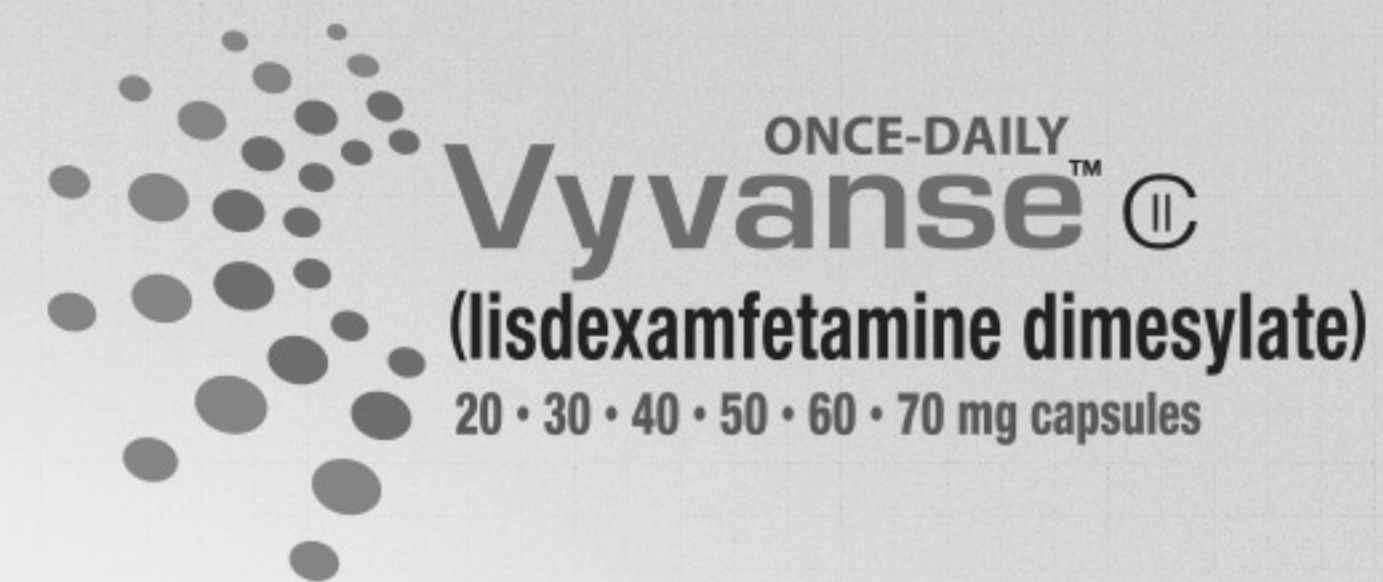
scripts

IMPORTANT SAFETY INFORMATION

WARNING: ABUSE AND DEPENDENCE

- **CNS stimulants (amphetamines and methylphenidate-containing products) have a high potential for abuse and dependence.**
- **Assess the risk of abuse prior to prescribing and monitor for signs of abuse and dependence while on therapy.**





IMPORTANT SAFETY INFORMATION

WARNING: ABUSE AND DEPENDENCE

- **CNS stimulants (amphetamines and methylphenidate-containing products) have a high potential for abuse and dependence.**
- **Assess the risk of abuse prior to prescribing and monitor for signs of abuse and dependence while on therapy.**

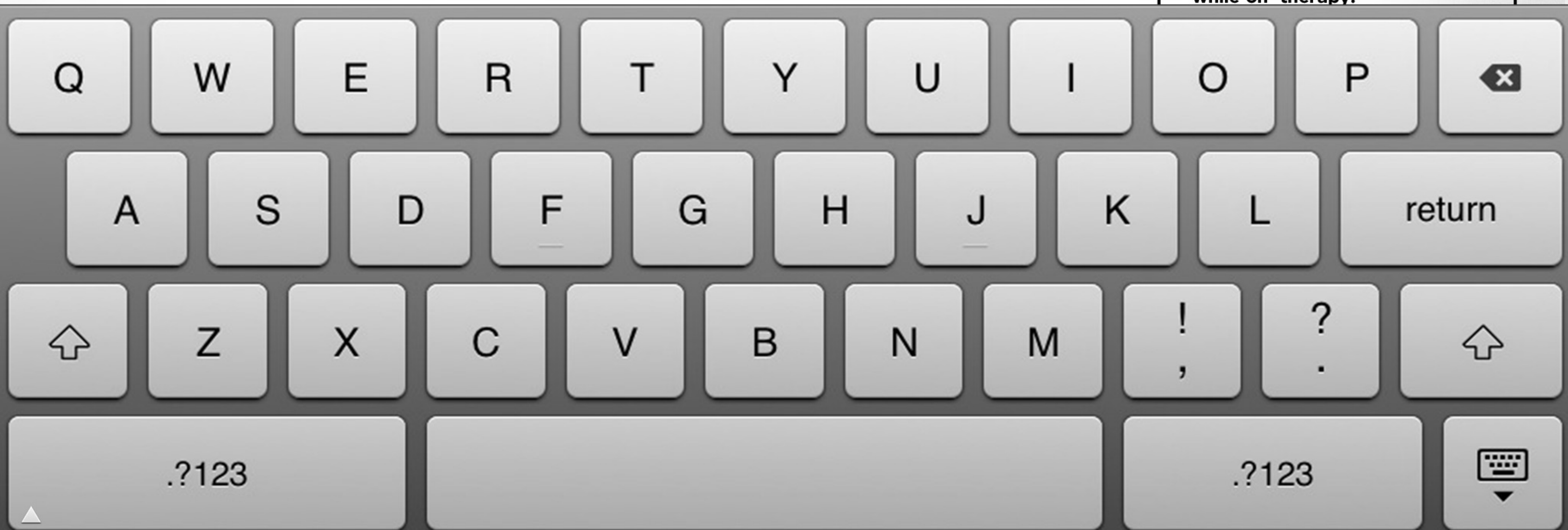
ALL Commercial Medicaid Plans

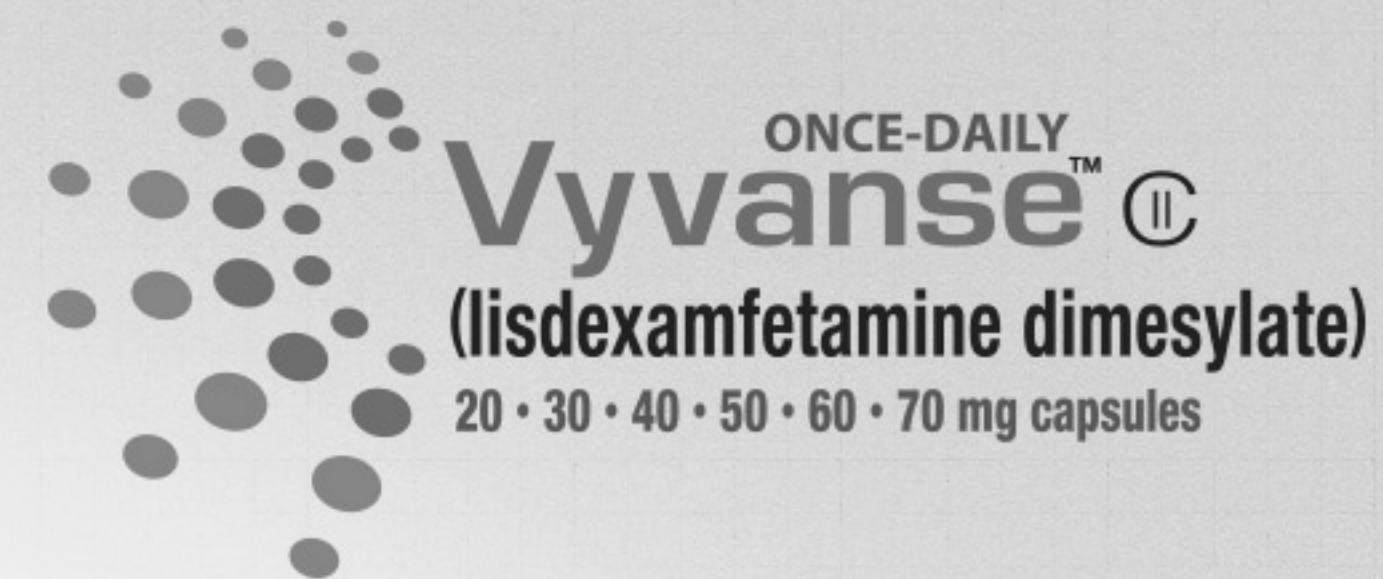
Ant 🔍

- Anthem**
- Blue Cross > **Anthropologists**
- Financial Planners > **Anthony Stacy, LLC**

Recently Searched Terms

California coverage scripts





ALL Commercial Medicaid **Plans**

Ant 🔍

Blue Cross > **Anthropologists**

Financial Planners > **Anthony Stacy, LLC**

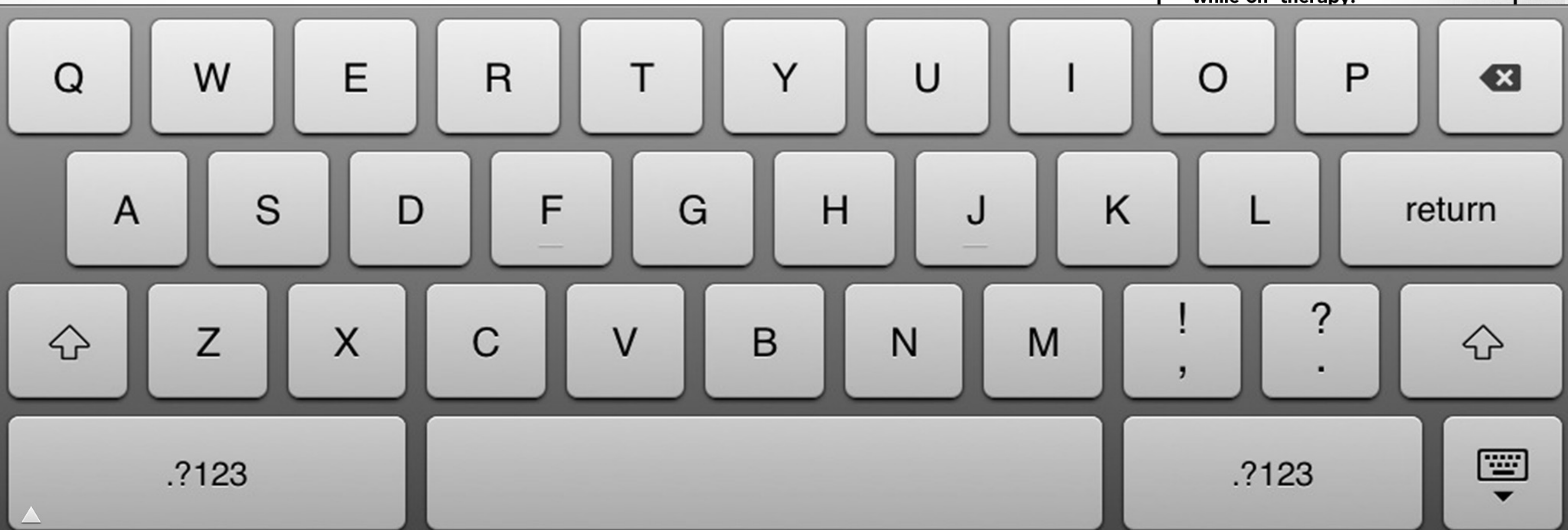
Recently Searched Terms

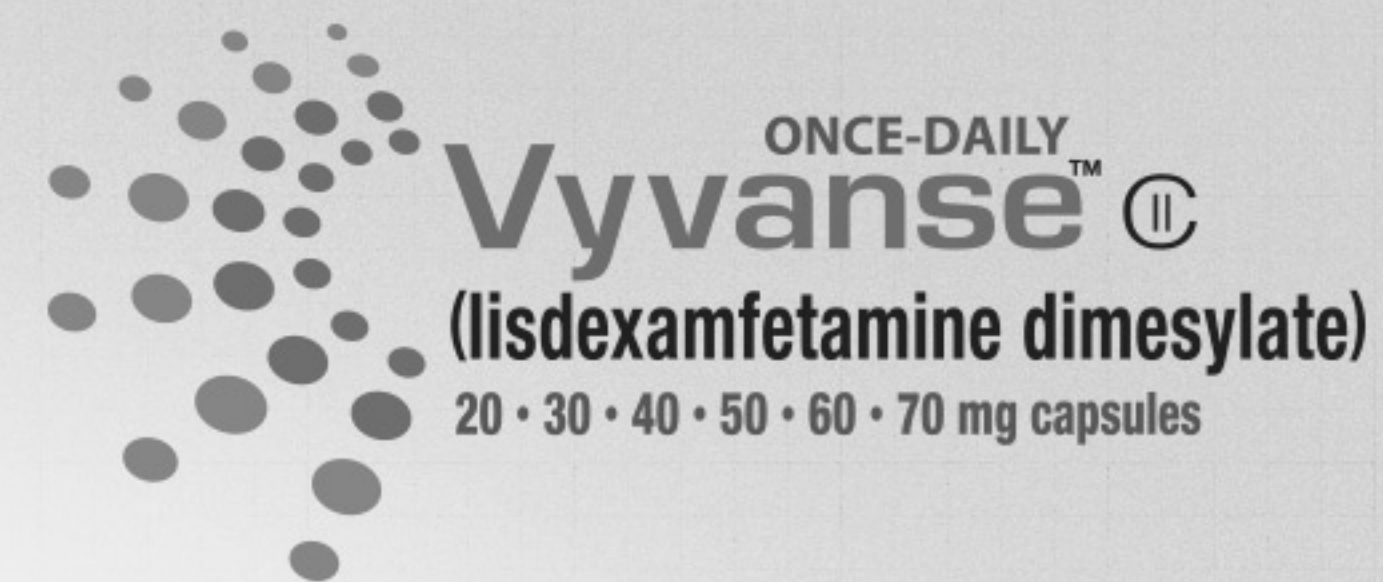
California coverage scripts

IMPORTANT SAFETY INFORMATION

WARNING: ABUSE AND DEPENDENCE

- **CNS stimulants (amphetamines and methylphenidate-containing products) have a high potential for abuse and dependence.**
- **Assess the risk of abuse prior to prescribing and monitor for signs of abuse and dependence while on therapy.**





ALL Commercial Medicaid **Plans**

Ant

Blue Cross > **Anthropologists**

Financial Planners > **Anthony Stacy, LLC**

Recently Searched Terms

California coverage scripts

IMPORTANT SAFETY INFORMATION

WARNING: ABUSE AND DEPENDENCE

- **CNS stimulants (amphetamines and methylphenidate-containing products) have a high potential for abuse and dependence.**
- **Assess the risk of abuse prior to prescribing and monitor for signs of abuse and dependence while on therapy.**




Vyvanse is indicated for the treatment of ADHD in patients ages 6 and above

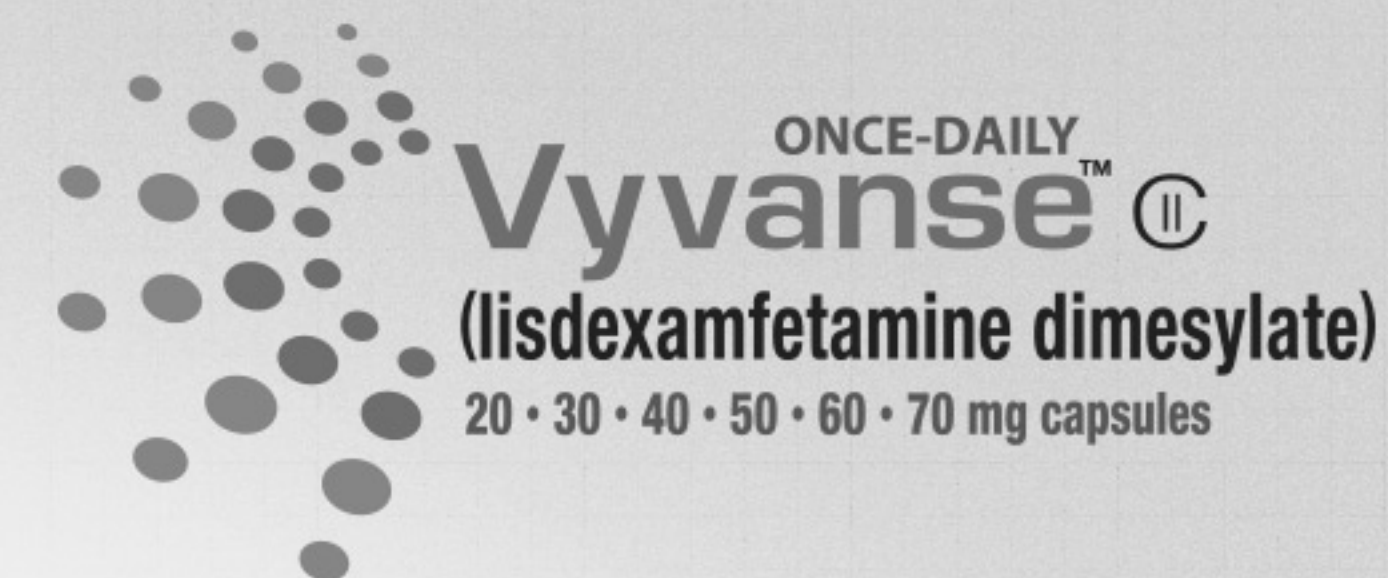
Access and Affordability in the Greater San Francisco Area

> Commercial

Medicaid

Financial Planners > Anthony Stacy, LLC 

Health Provider / Plan (1)	Status*	Copay*
Financial Planners 	Tier 2	\$25-\$35
Anthony Stacy, LLC	Tier 2	\$20-\$45



IMPORTANT SAFETY INFORMATION

WARNING: ABUSE AND DEPENDENCE

- **CNS stimulants (amphetamines and methylphenidate-containing products) have a high potential for abuse and dependence.**
- **Assess the risk of abuse prior to prescribing and monitor for signs of abuse and dependence while on therapy.**

- **Contraindications**
- **Known hypersensitivity to amphetamines or other ingredients in Vyvanse. Anaphylactic reactions, Stevens-Johnson syndrome, angioedema**

Please see full prescribing information, including Boxed WARNING regarding Potential for Abuse and Dependence

ISI

Full PI

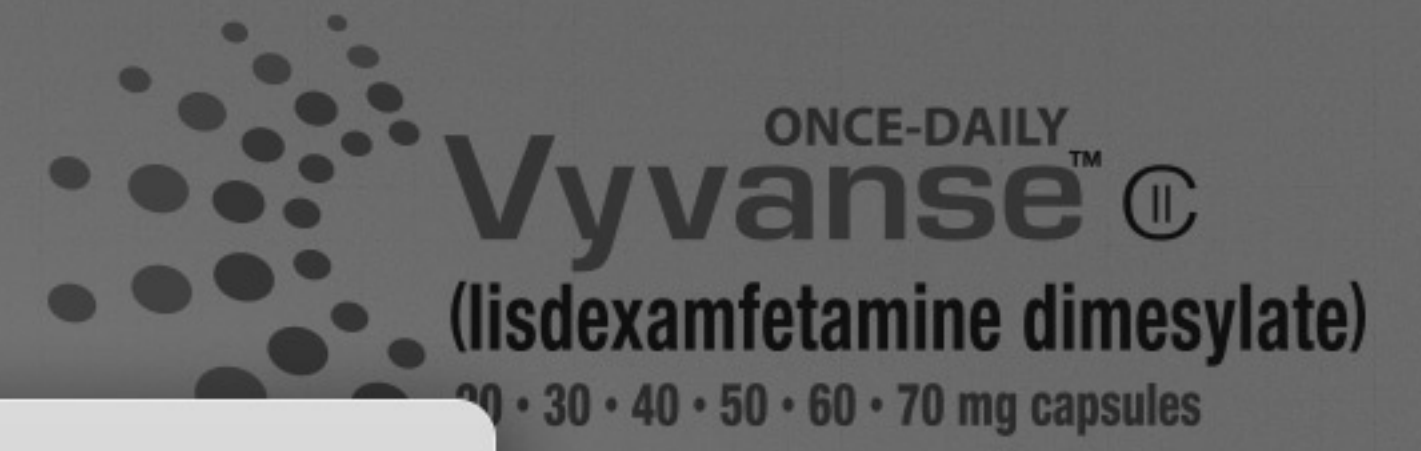
Summary

Data Current As Of
09.27.2013

Last Sync: 09.27.2013

*Formulary and copay data are provided by Fingertip Formulary, are ranked by covered lives.





Access and Affordability in the Greater San Francisco Area

- Commercial > M
- Health Pro
- STATE MED
- California S
- MANAGED M
- Santa Clar
- Anthem
- Alameda Alliance for Health

Send Access and Affordability Information

A PDF will be sent to the following e-mail address

E-mail

Include

All Providers

Only Selected Plans

Commercial | Medicaid

Send

Shire will not use the information collected here to send you any other communications. Please note: this screen must be completed by a health care professional.

IMPORTANT SAFETY INFORMATION

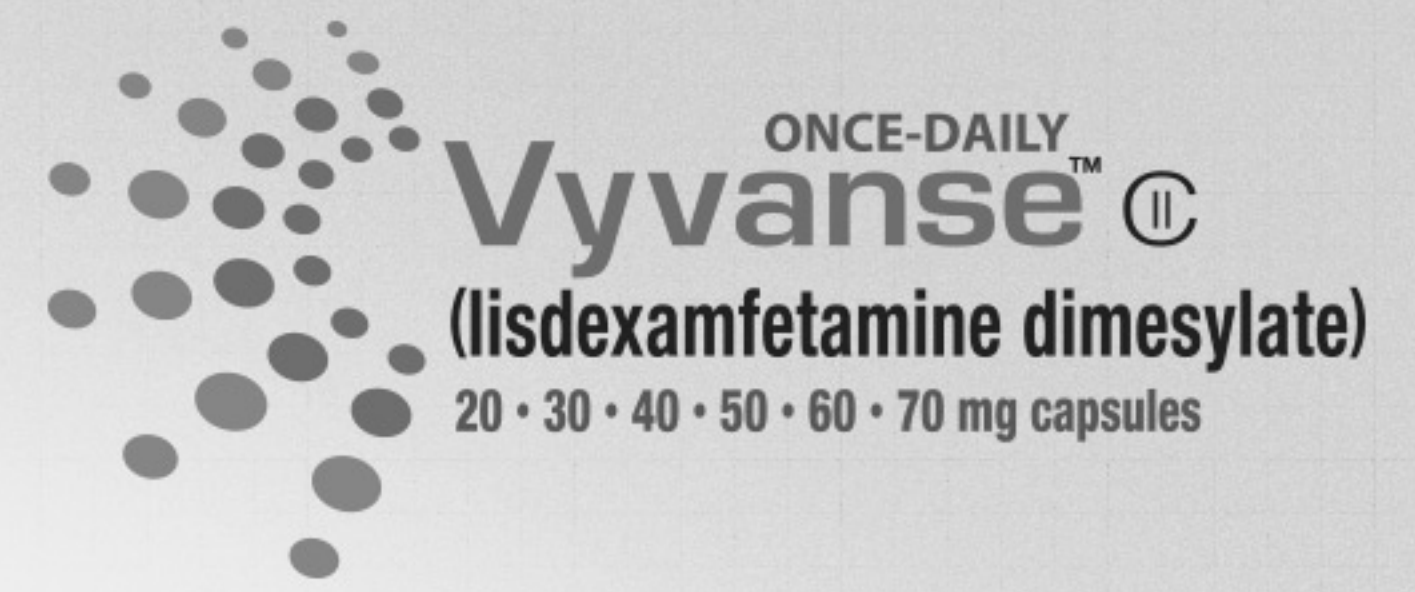
WARNING: ABUSE AND DEPENDENCE

Stimulant products (amphetamines, methylphenidate, and other products) have a potential for abuse and dependence.

Assess the risk of abuse prior to prescribing and monitor for signs of abuse and dependence while on therapy.



Coupon Edits



Vyvanse Savings Card

Your patients may be able to save money on their Vyvanse prescription*

How the Vyvanse Savings Card works:

- If your patient's prescription costs \leq \$30 card is **not** applicable
- If your patient's prescription costs \leq \$30 but \leq \$90, prescription cost will be \$30
- If your patient's prescription costs $>$ \$90, prescription cost will be [cost] - \$90, + \$30



with savings card

IMPORTANT SAFETY INFORMATION

WARNING: ABUSE AND DEPENDENCE

- CNS stimulants (amphetamines and methylphenidate-containing products) have a high potential for abuse and dependence.
- Assess the risk of abuse prior to prescribing and monitor for signs of abuse and dependence while on therapy.

- Contraindications
- Known hypersensitivity to amphetamines or other ingredients in Vyvanse. Anaphylactic reactions, Stevens-Johnson syndrome, angioedema

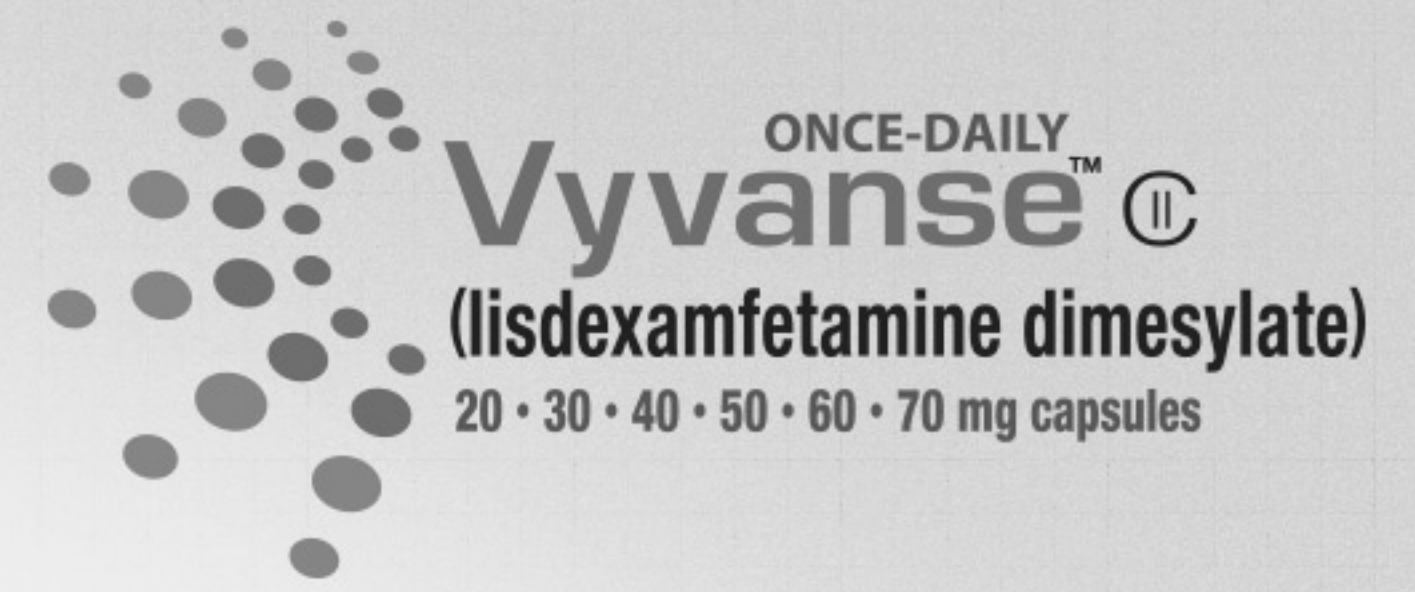
Please see full prescribing information, including Boxed WARNING regarding Potential for Abuse and Dependence

ISI Full PI

Summary

*Restrictions may apply



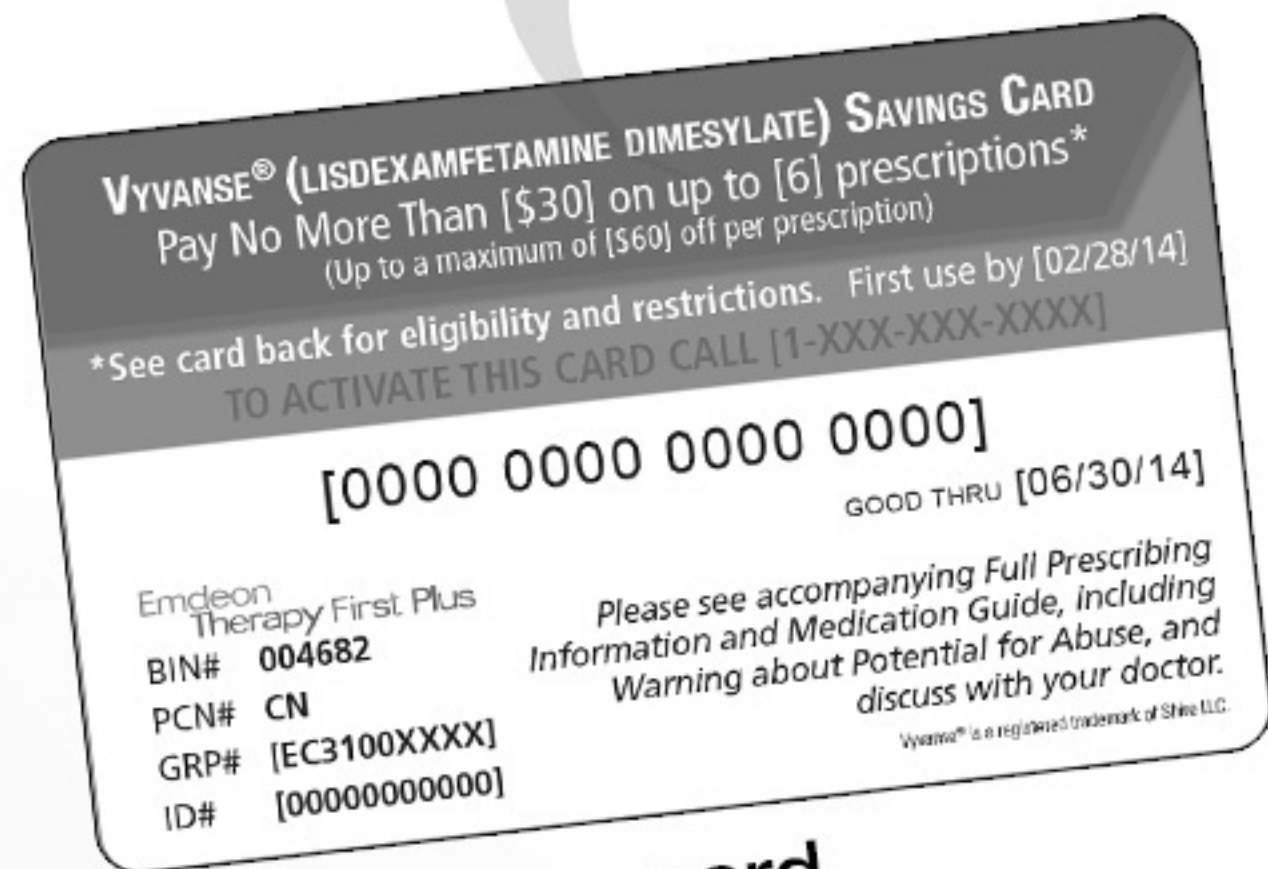


Vyvanse Savings Card

Your patients may be able to save money on their Vyvanse prescription*

How the Vyvanse Savings Card works:

- If your patient's prescription costs \leq \$30 card is **not** applicable



with savings card

- If your patient's prescription costs \leq \$30 but \leq \$90, prescription cost will be \$30

- If your patient's prescription costs $>$ \$90, prescription cost will be [cost] - \$90, + \$30

*Restrictions may apply



IMPORTANT SAFETY INFORMATION

WARNING: ABUSE AND DEPENDENCE

- CNS stimulants (amphetamines and methylphenidate-containing products) have a high potential for abuse and dependence.
- Assess the risk of abuse prior to prescribing and monitor for signs of abuse and dependence while on therapy.

- Contraindications
- Known hypersensitivity to amphetamines or other ingredients in Vyvanse. Anaphylactic reactions, Stevens-Johnson syndrome, angioedema

Please see full prescribing information, including Boxed WARNING regarding Potential for Abuse and Dependence

